

# Healthcare in Greater Manchester is changing



**Dr. Jonathan Berry**  
Clinical Champion – Primary Care

**Gina Lawrence**  
Chief Operating Officer

What does best care mean for you?

# Purpose of today

To listen to your views on the **Healthier Together** proposals

23<sup>rd</sup> July 2014



[twitter.com/healthiergm](https://twitter.com/healthiergm)  
#BestCare

What does best care mean for you?





# Gina Lawrence

What does best care mean for you?

## The vision

For Greater Manchester to have  
the best health and care in the  
country

What does best care mean for you?

# The speakers

What does  
Best Care  
mean to me?



What does best care mean for you?

# What is Healthier Together?

- To watch the Consultation video

<https://www.youtube.com/watch?v=QL0Dj5dfkYA>

What does best care mean for you?

# What is Healthier Together?

GP Surgeries,  
dentists,  
pharmacists  
and  
optometrists

**Primary  
Care**

**Joined  
up care**

**Hospital  
Care**

Different  
health and  
care services  
working  
together

What does best care mean for you?



# Joined up care – Best care for me

Best Care to me is less complicated, with all the professionals supporting me working together



What does best care mean for you?

# How are we joining up care?



District nurse



Social worker



Patient



Mental Health Nurse



GP

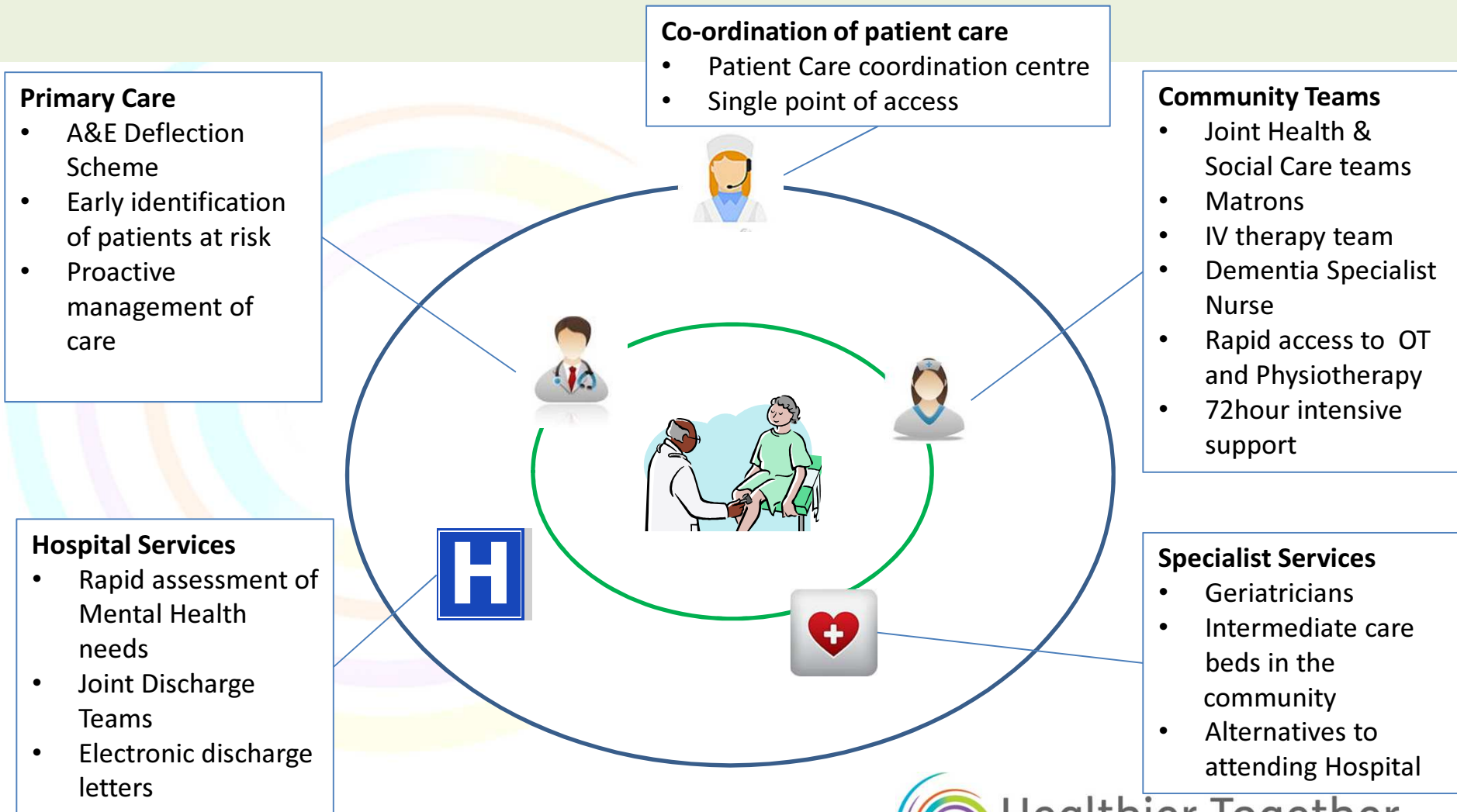


What does best care mean for you?



Healthier Together  
A review of health & care in Greater Manchester

# Changes already happening in Trafford



What does best care mean for you?

# Next steps in Trafford

Review of Frail & Older People services

Improved services for End of Life care

Redesign of Community Paediatric services



Implementation of Health and Wellbeing Hub

Implement the Patient Care Coordination Centre (2015)

Increased services in Primary Care

What does best care mean for you?

# Primary care – Best care for me

For most people, contact with health and social care services begins with a visit to the GP, dentist, pharmacist or optometrist

Best Care to me is being able to see my GP more easily when it suits me

What does best care mean for you?



# Our key aims for Primary Care

By the end of 2015 all Greater Manchester residents...

With a clinical need will have same day access to Primary Care services, seven days a week

With long term, complex or multiple conditions will be cared for in the community where possible

Will have access to their own records, helping to join up their care

What does best care mean for you?



**Jonathan Berry**

What does best care mean for you?

# Hospital care – Best Care for me

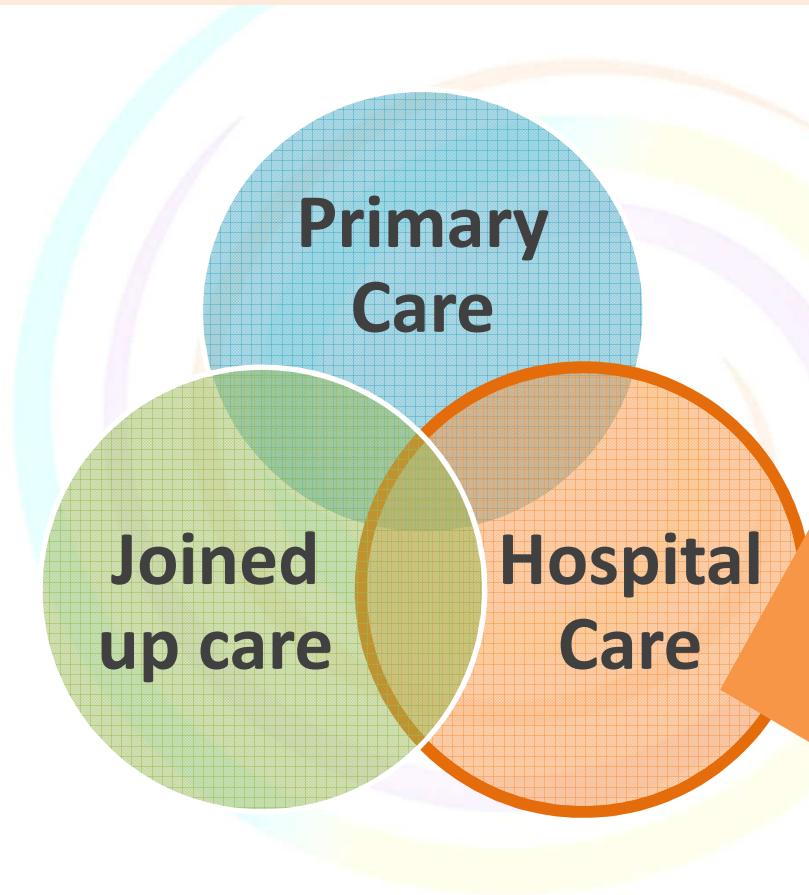


**Best Care for me is knowing that my patients will get the specialist care they need in an emergency**

**What does best care mean for you?**



# Hospital care - scope



**A&E** – Accident and Emergency

**Acute Medicine** – treats adult patients with a wide range of conditions who arrive in hospital in an emergency and need immediate specialist care

**General Surgery** – abdominal surgery, both emergency and planned operations. It also includes the assessment and treatment of patients with abdominal pain

What does best care mean for you?

# Hospital care – consulting you

- The NHS is changing how and where these specialist hospital services are delivered
- This means they need to consult you and **find out what you think** about this
- Events will be happening from July – September across Greater Manchester to **gather your views**

What does best care mean for you?

# What's your experience of hospital care?

Similar patients,  
different experience

A map of Greater Manchester with various hospital locations marked with blue 'H' icons and labels. The locations include Fairfield, Rochdale, Bolton, Royal Bolton, Bury, Oldham, North, Salford, Manchester, Trafford, Trafford General, Stockport, Stepping Hill, and Hospital. A large orange-bordered text box is overlaid on the map, containing the following text:

Strong evidence suggests that for the sickest patients who need emergency general surgery in Greater Manchester, the risk of dying may be **twice as likely** at some hospitals compared to others

What does best care mean for you?

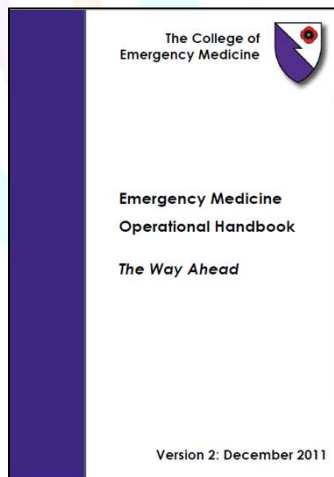


Healthier Together  
A review of health & care in Greater Manchester

But, we know what the answer is...



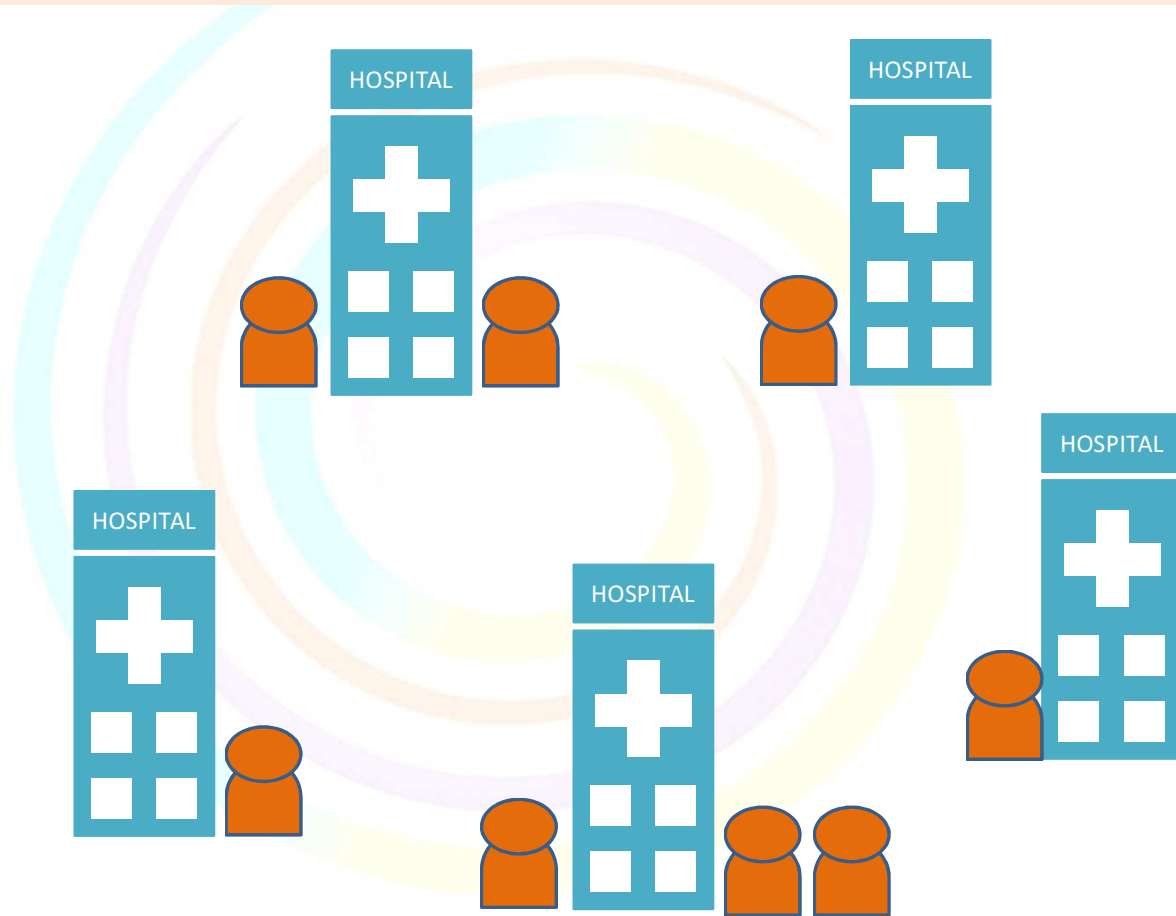
Patients undergoing emergency general surgery have access to an intensive care bed



There should be consultant doctors in Accident & Emergency during peak hours

What does best care mean for you?

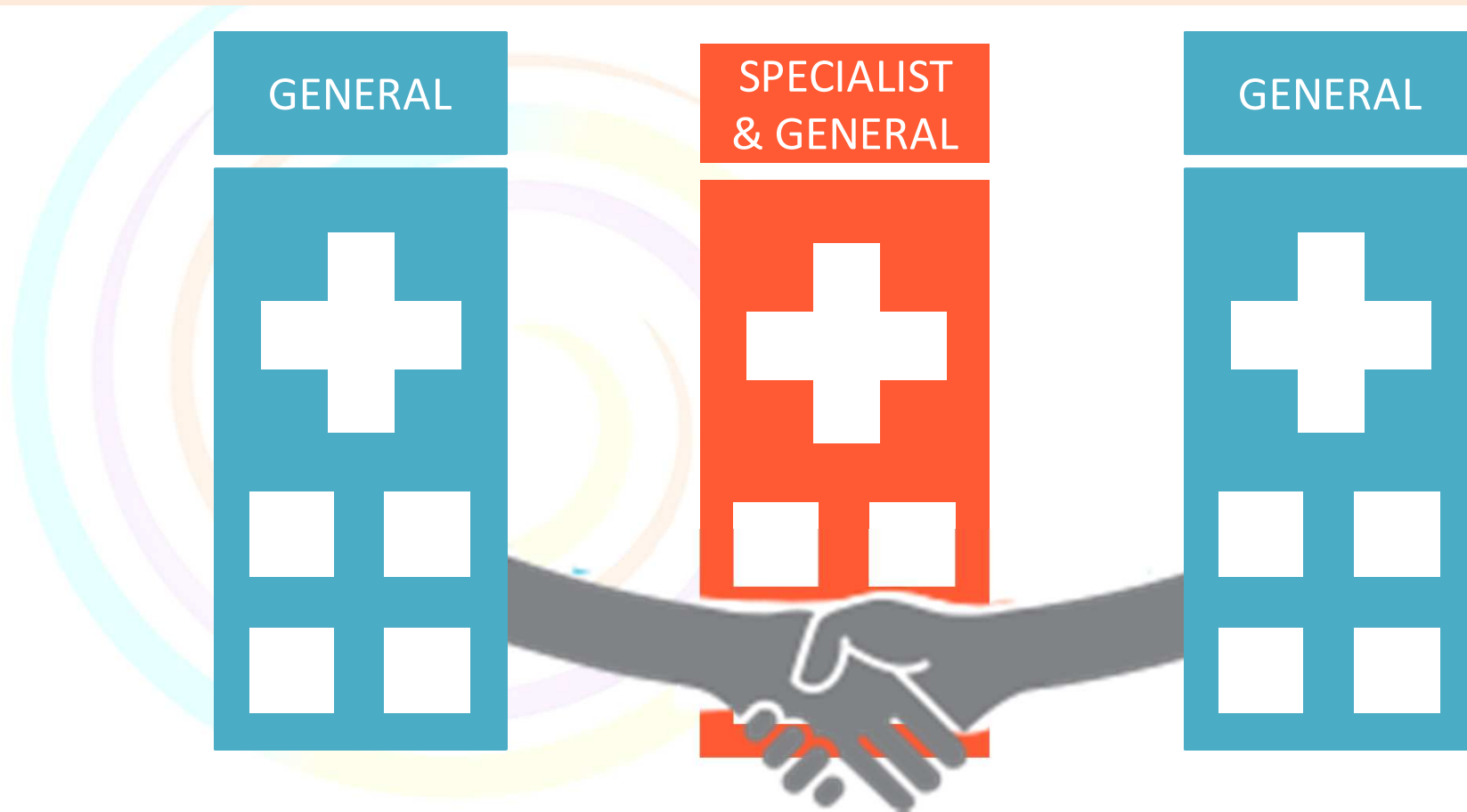
# So, what do we do?



*Q. Can't we just implement the standards at every hospital?*

What does best care mean for you?

# Working together – Single Services



What does best care mean for you?

# Single Services – how will this work?



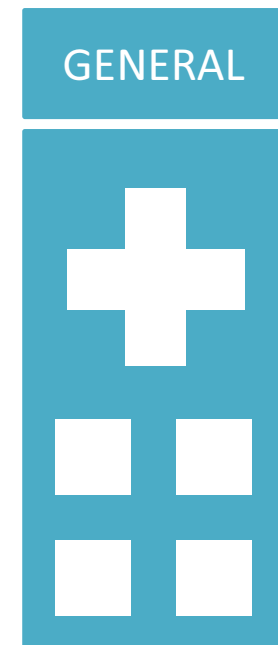
**Dr Hussain**

What does best care mean for you?

# General Hospitals

Deliver care locally for the majority of patients:

- All hospitals will have an A&E and acute medicine
- Planned general surgery operations for adults
- Testing and outpatients
- **Upgraded to meet the standards. None of our hospitals meets these standards now**



What does best care mean for you?

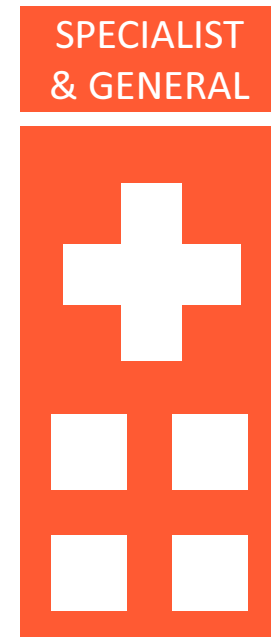


# Specialist Hospitals

Provide General hospital care to the local population **AND**

Care for the very small number of very sick patients across a wider area of Greater Manchester:

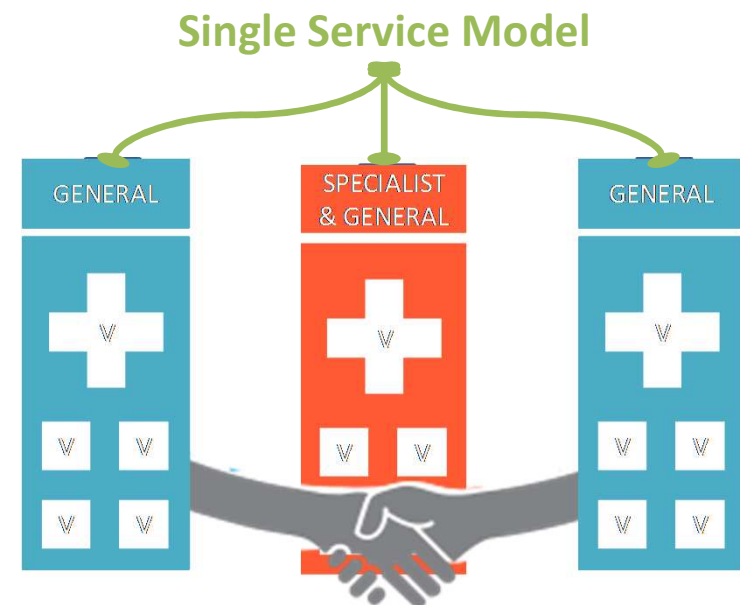
- Emergency and high risk general surgery operations
- Intensive care for complex patients
- Delivered in line with national standards



What does best care mean for you?

# What does this mean for me?

- You will receive the **majority of your care locally**
- If you become very sick you will receive the **very best possible care**
- Paramedics will make sure that you are **taken to the right hospital** for your care
- **All** hospitals upgraded to meet the standards

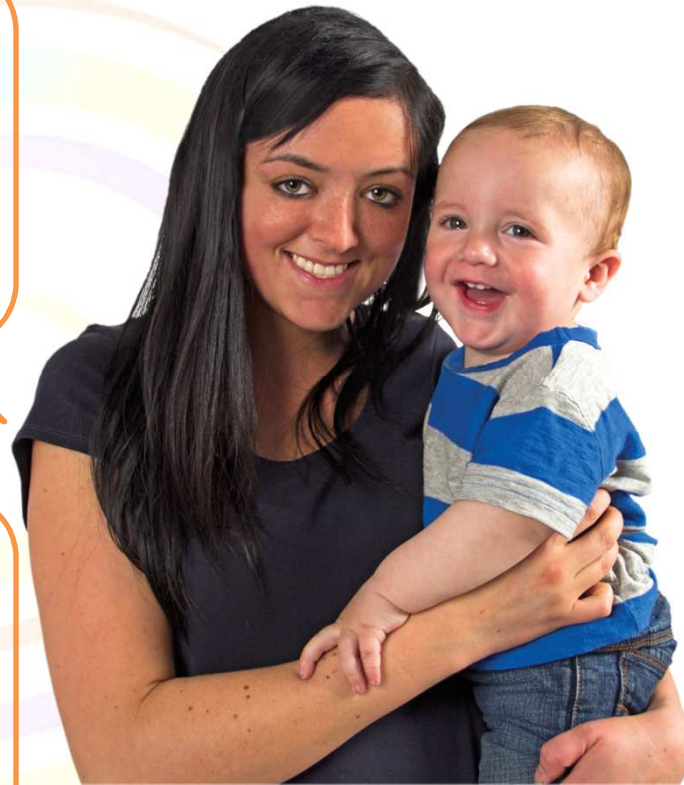


What does best care mean for you?

# What does this mean for me?

Does it mean I will have to travel further?

How do we know this will work?



How do I get to the right hospital?

Will my local A&E or hospital shut?

What does best care mean for you?



**Healthier Together**  
A review of health & care in Greater Manchester

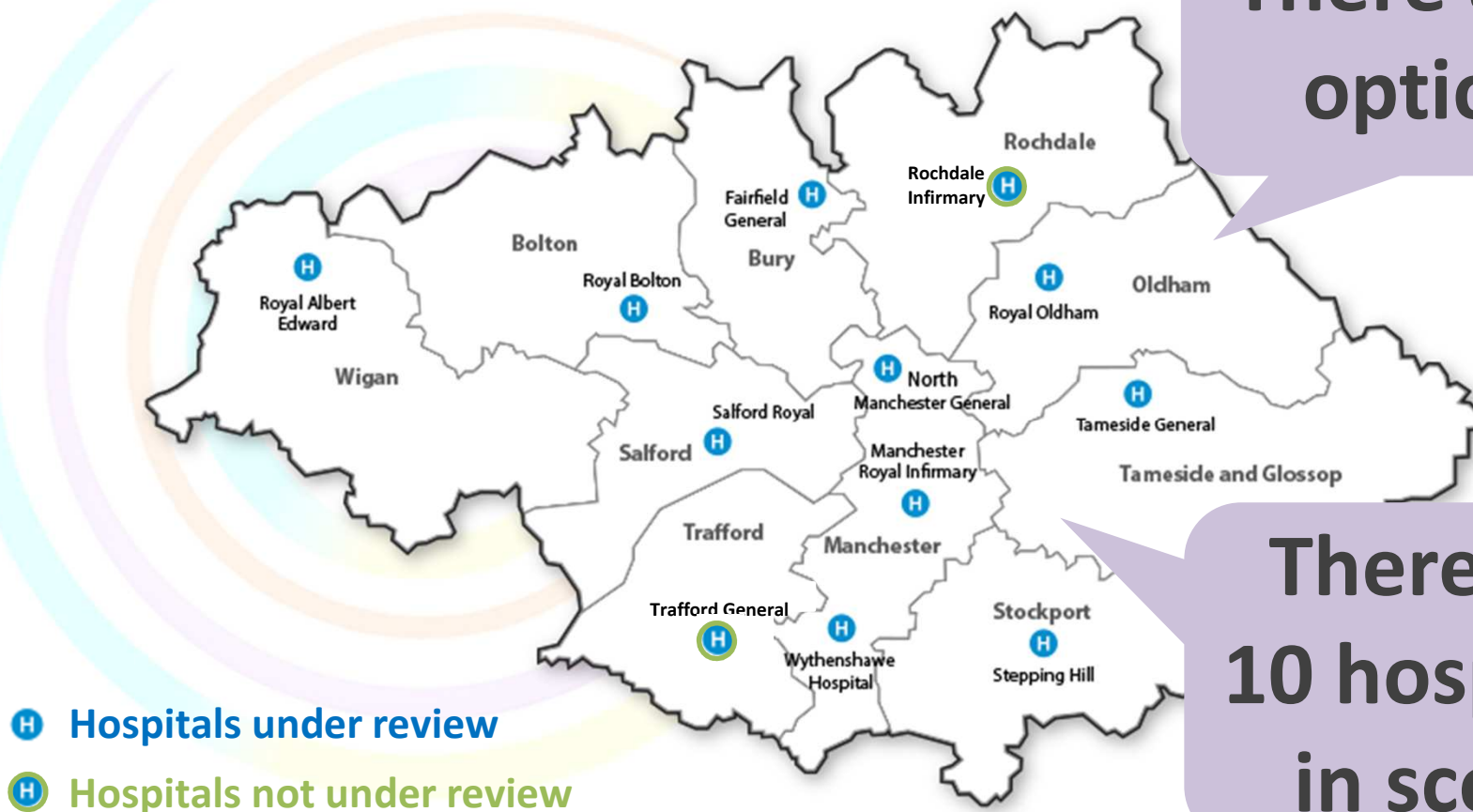
# Hospital care – consulting you

- The NHS is changing how and where these specialist hospital services are delivered
- This means they need to consult you and **find out what you think** about this
- Events will be happening from July – September across Greater Manchester to **gather your views**

What does best care mean for you?

# Which hospitals are General and which are Specialist?

There are 8 options



- H** Hospitals under review
- H** Hospitals not under review

There are 10 hospitals in scope

What does best care mean for you?

# What was considered?

- Can the standards be met?
- How quickly people can access Specialist care?
- Is there a good spread across Greater Manchester?
- How much would it cost to implement and run the services?



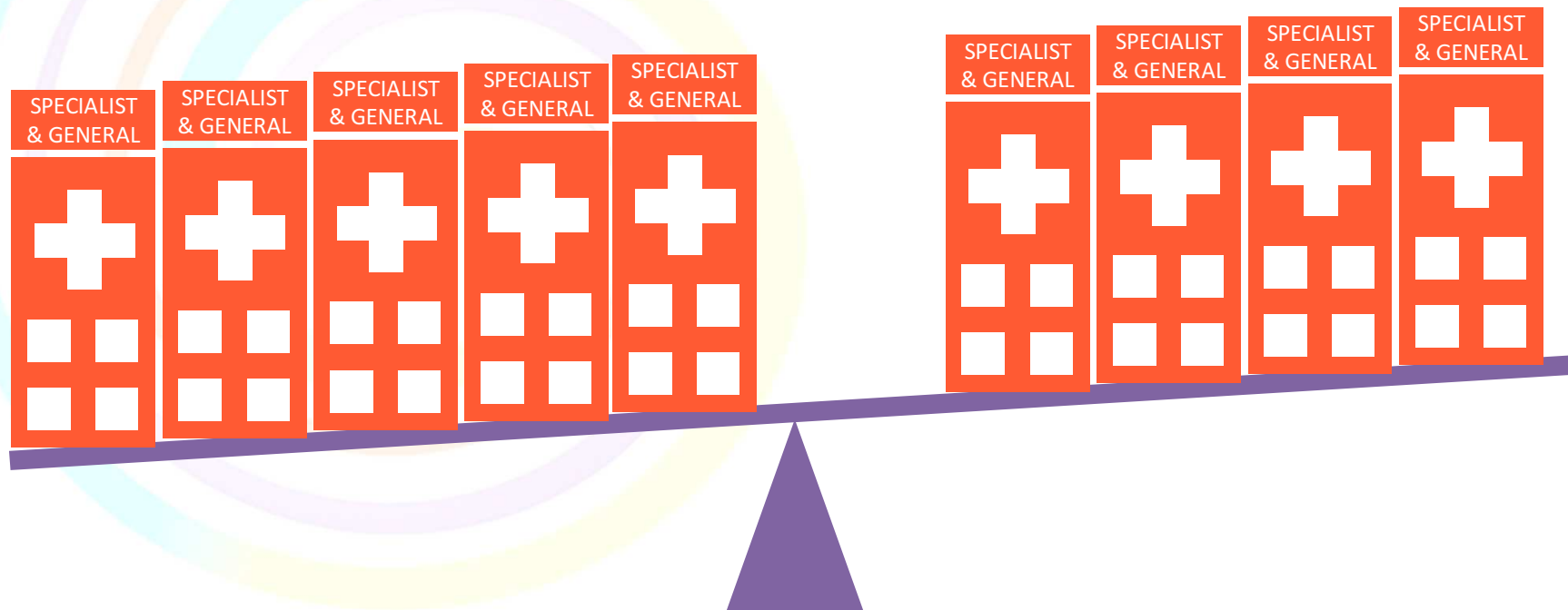
£?

What does best care mean for you?

# How many Specialists?

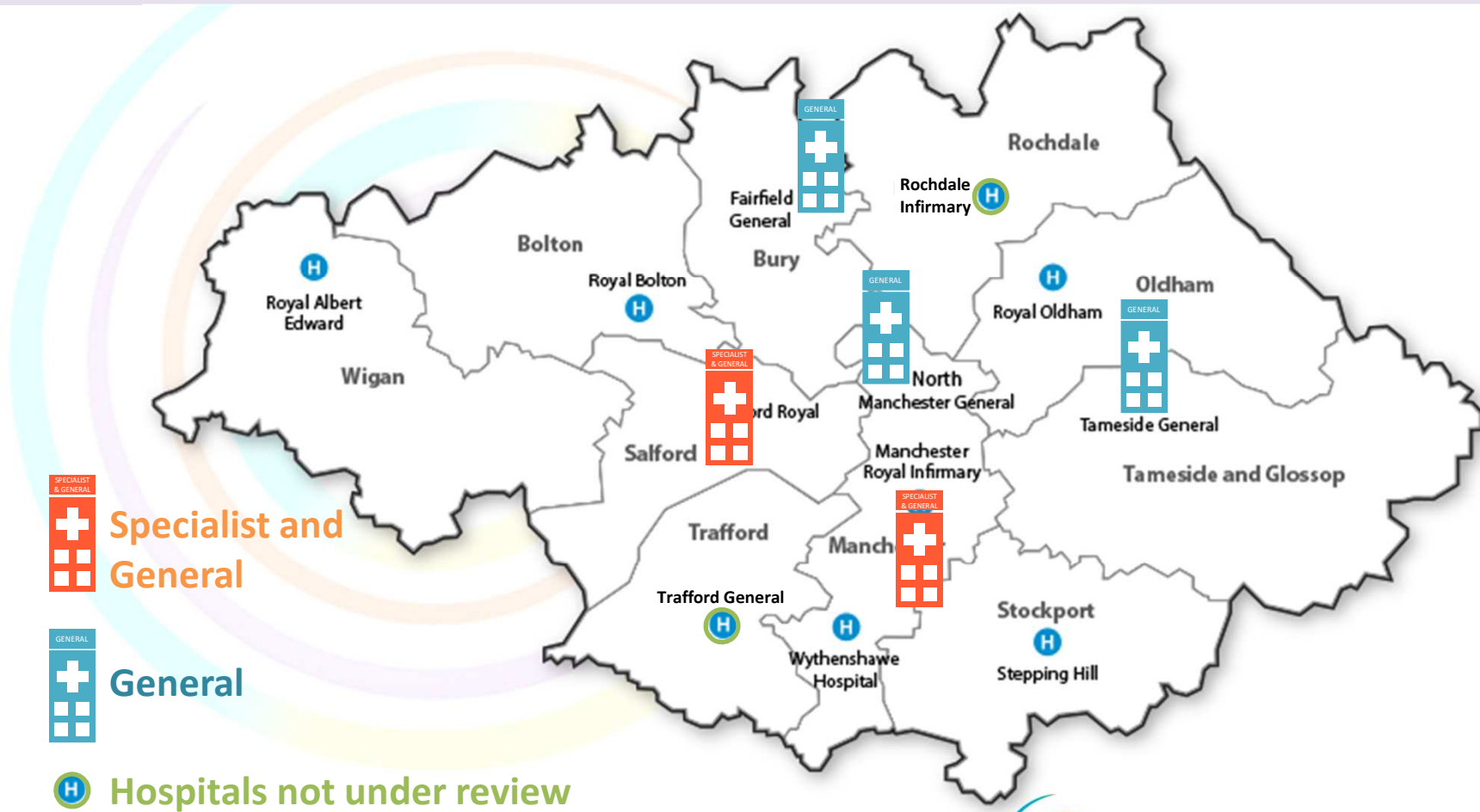
5?

4?



What does best care mean for you?

# The 8 options – What is the same?

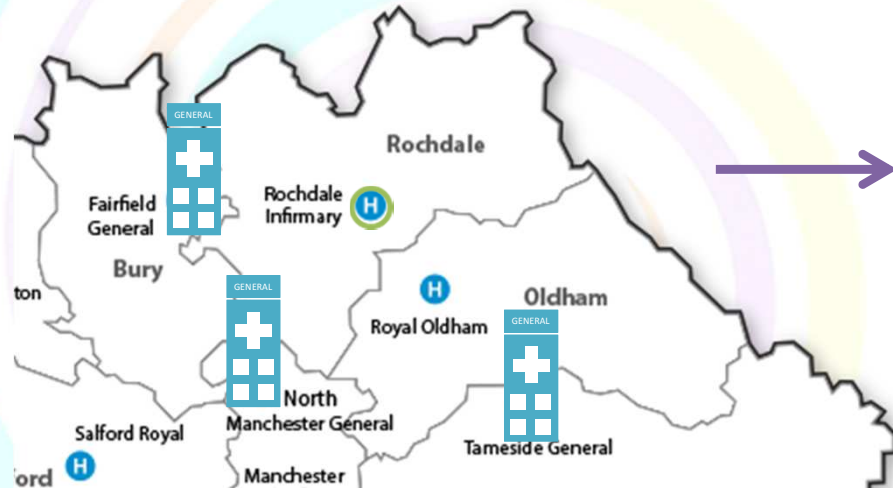


What does best care mean for you?



# The 8 options – results of transport analysis

We analysed the impact of the options on...

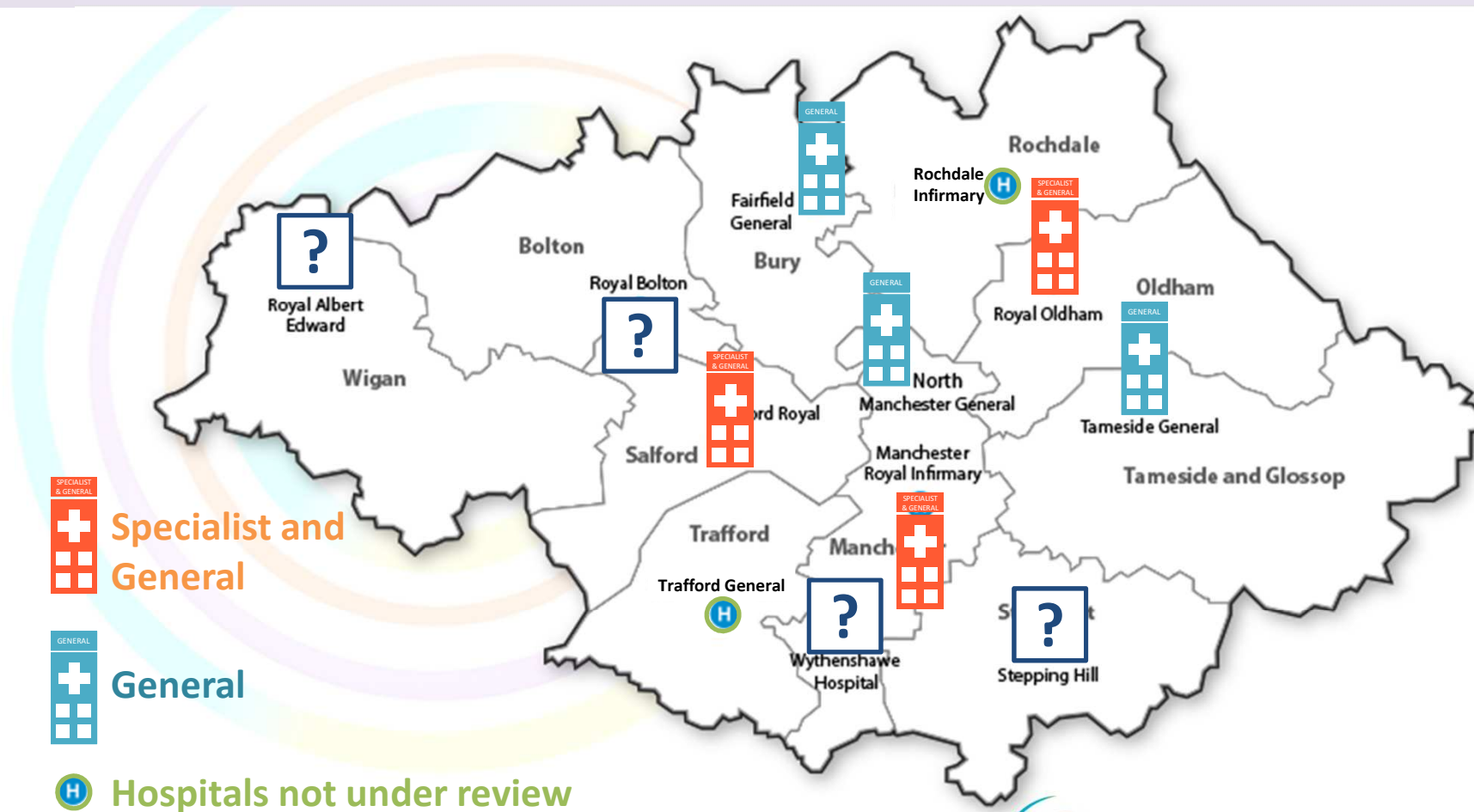


- 75 minutes to a specialist site by public transport
- Increase in travel time

To meet our travel standard, **Royal Oldham also needs to be a Specialist Hospital site**

What does best care mean for you?

# The 8 options – What do we have to decide?



What does best care mean for you?

# Options with 4 Specialist Sites

Specialist sites: MRI, Salford Royal, Royal Oldham +

Option 4.1 → Royal Bolton

or

Option 4.2 → Royal Albert Edward Infirmary, Wigan

or

Option 4.3 → Wythenshawe

or

Option 4.4 → Stepping Hill, Stockport

What does best care mean for you?

# Options with 5 Specialist Sites

Specialist sites: MRI, Salford Royal, Royal Oldham +

**Option 5.1** → Royal Albert Edward, Wigan **and** Stepping Hill

or

**Option 5.2** → Royal Albert Edward, Wigan **and** Wythenshawe

or

**Option 5.3** → Royal Bolton **and** Wythenshawe

or

**Option 5.4** → Royal Bolton **and** Stepping Hill, Stockport

What does best care mean for you?

# Comparing the options

We asked the public “what is important to them”  
The options have then been assessed against these criteria:

- **Quality and safety**
- **Travel and access**
- **Affordability and value for money**
- **Transition (how easy to implement)**

What does best care mean for you?

# Who has made the decisions?

- Healthier Together is clinically led
- The decision makers are the 12 Greater Manchester Clinical Commissioning Groups
- They meet as the Committees in Common



What does best care mean for you?

# What happens next?

Consultation  
12 weeks

Analysis of  
consultation  
responses

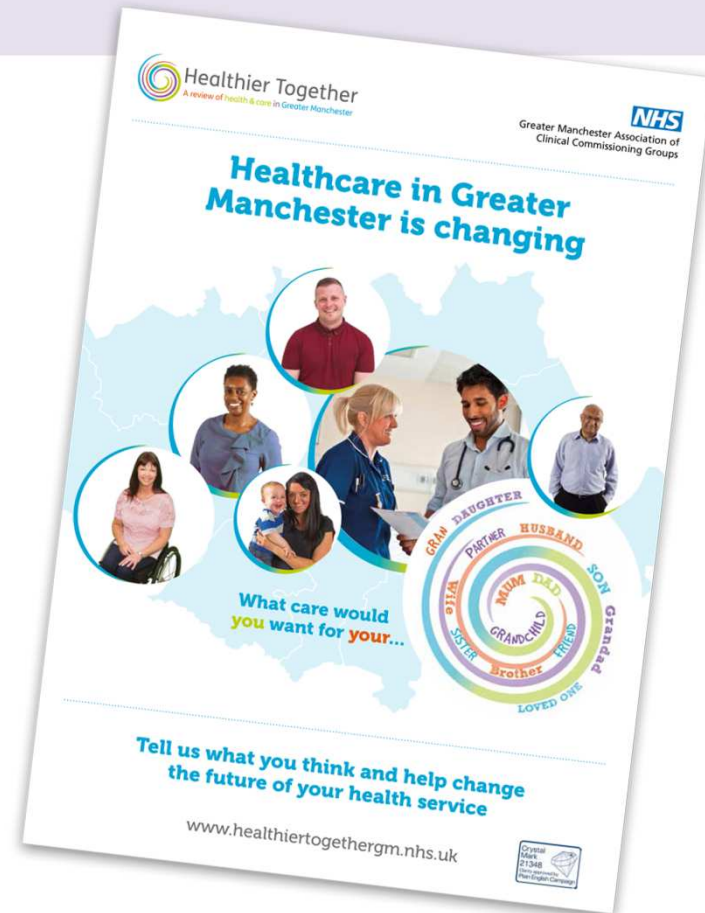
Decision Making

What does best care mean for you?

# Consultation document

More detail can be found in the document and online

Please complete a consultation document before you leave - we want to hear your views



What does best care mean for you?



Any Questions?

What does best care mean for you?

# How to get in touch



0800 888 6789



[healthiertogethergm.nhs.uk](http://healthiertogethergm.nhs.uk)



Follow us on **twitter**  
[www.twitter.com/HealthierGM](http://www.twitter.com/HealthierGM)



Like us on **facebook**.  
[www.facebook.com/healthiertogethergm](http://www.facebook.com/healthiertogethergm)